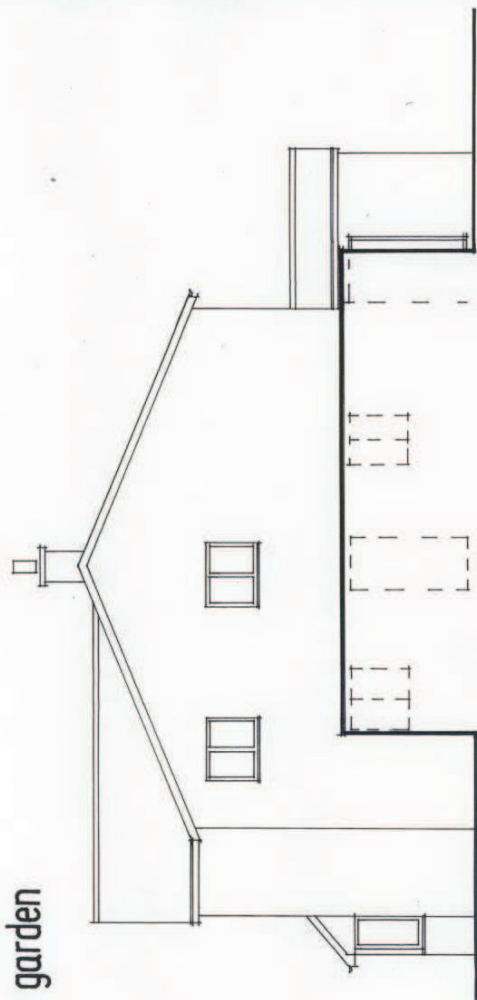




front

garden



side

side

elevations

<p>George Davidson Architects, 251 Mill Road, Cambridge. CB1 3BE. Tel. 01223 576874.</p>	<p>4 TOPCLIFFE WAY, CAMBRIDGE. proposal Scale 1:100 at A3 Date FEB. 2013. Dwg. No D.100.3</p>
--	---